

the loop.

Keeping you in it

November 2023

POSTER INSIDE

Gold Friday Initiative

BUSINESS FEATURE

PGG Wrightson

Our Committee

Meet the New Faces of the PBA

Give it a Whirl

Guthrie Bowron

Nau mai, haere mai Welcome to Pukekohe

Contents

- P3. MANAGER'S REPORT
- P4. NEWS FROM THE PBA
- P5. WHAT'S ON IN NOV-DEC
- P6. GOLD FRIDAY FOR GOOD
- P9. GIVE IT A WHIRL: GUTHRIE BOWRON
- P10. MEET THE COMMITTEE
- P12. FEATURE: PGG WRIGHTSON
- P14. LOCAL ACHIEVEMENTS

WE ADVOCATE
FOR, SUPPORT, &
PROMOTE LOCAL
BUSINESSES

Christmas at the Pukekohe Business Association

With the recent completion of our last school holidays event and our AGM, we have now set our sights on the silly season.

Here at the PBA, we go all out for Christmas!

You may be aware that we tend to bring a lot of festivity to Pukekohe each December and this year is no exception.

This year's festivities

- **Giant Christmas Tree** - On the 18th of November we are setting up our brand new Christmas tree in the town square!
- **Christmas on the Green** - A family day of Christmas fun, live music, amusement rides, food trucks and a visit from Santa
Saturday 2 December, 3 - 7:30 PM
Free Entry
- **Letters to Santa** - Our large Christmas Mailbox will be stationed out our office (217 King Street), for locals to write letters to Santa and post it to the North Pole. Each letter gets a personalised reply!
- **12 Days of Christmas** - We will be doing 12 days of glorious giveaways on our social media. Be in to win some great prizes on Facebook and Instagram @pukekoheba and TikTok @lovepukekohe

For more information about the PBA or The Loop, please contact us on 09 910 0137 or email, info@pukekohe.org.nz

MANAGERS' REPORT

There's a first for everything



Last month, the PBA held its AGM which reflected on the 2022-2023 financial year.

Typically, the PBA struggles to get engagement for our AGMs. They don't exactly have a reputation for being a "fun night out". However, this year we broke a few records!

Our attendance was the most we have seen in a very, very long time. It was great to see some new faces which tells me more of our members are keen to hear what we have achieved and what we have planned for the coming years.

We kept it short and sweet! Believe it or not, we were able to keep our meeting to one hour! This is a massive improvement on the previous drawn-out AGM's.

And finally, not in our AGM history have we ever needed to go to a vote for committee members, let alone a tiebreaker! With 5 of our current members being on their first term, we had 6 spaces to fill. As we received 10 applications to fill those spaces, a vote was required.

After the first round of votes were tallied, a tie-breaker vote was required to finalise our last two positions. With very close margins, we welcomed our new committee (outlined below).

I'm so grateful to have so many deserving, talented, engaged and supportive members willing to give their time to support further and bolster our business community.

Over the next two months, we will be highlighting our committee members to give them kudos for their dedication and commitment.

Regardless of if you are a committee member or not, I welcome all feedback or insights from you.

"Our members are key to steering our support where it needs to be."

We love when we can take on and support the ideas from members to uplift our business community.

This month, we're getting behind the 'Gold Friday' initiative suggested to us by Greg Hicks, owner of Preview + District. More info about this can be found on page 6.

So please, don't hesitate to reach out, even if it's for a coffee to catch up on what we are up to!

Shawna Coleman, PBA Manager

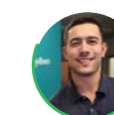
Administration



Manager
Shawna Coleman
shawna@pukekohe.org.nz



Communications & Events Coordinator
Courtney Johnson
courtney@pukekohe.org.nz



Membership Liason
Logan Soole
logan@pukekohe.org.nz

Committee



Rupert Ross
Vibra-Train Pukekohe
09 238 1951



Philippa O'Mara
Engine Room
Chartered Accountants
09 238 5939



Melissa van den Brink
Smith & Sons Renovations & Extensions Franklin
0800 002 760



Alan Cole
Franklin Local Board Representative
021 923 719



Ash Hawke
Signmax Pukekohe
09 238 8695



Holly Jansen
The Daily Goods



Joshua Parsons
Crosbies Security
0800 113 262



Maree Trow
Stirling Sports Pukekohe
09 238 7689



Sharon England
TopNotch Engraving & Book Exchange
09 238 5684



Merritt Watson
Pik n Mix Lollies
021 425 555



Nutthida Boonprasert
Modish & Muse
09 238 7797



Peter Elliot
Computer Food
09 238 7689

09 910 0137
pukekohe.org.nz
info@pukekohe.org.nz

Follow us on
Facebook & Instagram
[@pukekoheba](https://www.facebook.com/lovepukekohe)

Disclaimer: Whilst every effort has been made to provide valuable, useful information in this publication, the Business Association accepts no responsibility or any form of liability from reliance upon or use of its contents. Any suggestions should be considered carefully within your own particular circumstances, as they are intended as general information only.

— News From The PBA

This month we are encouraging retailers to take part in the 'Gold Friday' initiative, we also cover our AGM, the October School Holidays event, and current roadworks

GOLD FRIDAY (SEE PAGE 6-7 FOR MORE)

This year, some of our businesses are joining the Gold Friday initiative. It's a feel good alternative to Black Friday sales.

Instead of discounting stock during the peak shopping season, businesses pledge 5% of sales from the day on 24 November (or a fixed amount) to a charity.

Greg from Preview + District suggested local businesses could combine efforts to support a local charity. We have included more info page 6 and a poster for shop windows.

We want to promote any of the businesses that participate. If you'd like to join the local businesses in this initiative, please email us at shawna@pukekohe.org.nz



AGM OUTCOMES

Not only did we introduce our new committee, we got the green light for our annual plan of work, our budget allocations, reviewed our last financial year and locked in our strategic plan for the next five years.

This AGM received a record amount of nominations and engagement thanks to everyone that came along and supports what the association does.

Our 2024/2025 budget includes a 4% targeted rate increase of \$20,000. You can view more from the meeting at www.pukekohe.org.nz

ROUNABOUT UPGRADES

Auckland Transport is in the middle of the first stage of construction to improve safety around Pukekohe Town Centre's major roundabouts.

Road closures primarily affect the one connecting Edinburgh Street, Wesley Street and Massey Ave. This is aimed to be finished by Wednesday 21 November.

Through our advocacy efforts, we can ensure access to businesses remains open, a quick turnaround time, the second stage will take place after our busy December trading period and the extent of these closures will be limited during unattended hours.

For further information, contact atengagement@at.govt.nz



SCHOOL HOLIDAYS IN THE SQUARE

In October, we hosted our free School Holidays event! A range of entertainers and musicians captured audiences of all ages from noon until the late evening.



(Pictured above, Jazz Quartet featuring Libby Claire closed off the evening).

The lineup also included local musicians, Aro, Kapahaka performances from Honotahi Engage You and a magic show from Popcorn the Clown.

Expanding from the usual Town Square activities, we also hosted an ice rink, foam pit and a bunch more activities at the Roulston Carpark across the road. This catered to wider age ranges and the longer hours meant it was possible for families to attend after work.



Huge thanks to everyone that came down, our stall holders, entertainment providers and Franklin Local Board and Eke Panuku for making this day possible.

What's On

Local events in Nov - Dec

GARDEN AND LIFESTYLE FESTIVAL

WHEN: Saturday 4 November, 9AM - 4PM

WHERE: 14 Belgium Road

CHRISTMAS MARKET

WHEN: Wednesday 15 November, 6:30PM - 9:00PM

WHERE: Franklin Club, 7 East Street

CHRISTMAS GROTTO

WHEN: 18 - 26 Novemer, 2PM - 8:30PM

WHERE: Pukekohe Town Hall

CHRISTMAS ARTISAN MARKET

WHEN: Saturday 25 November, 9:30PM - 1:30PM

WHERE: Franklin Arts Centre & the Library, 12 Massey Ave

CHRISTMAS ON THE GREEN

WHEN: Saturday 2 December, 3PM - 7:30PM

WHERE: Navigation Homes Stadium

WHAT: A free family event of festivities (see back cover for details)

BUSINESS & BEERS

Our last business and beers for 2023 is next month. And we're getting festive!

While December is a busy time, we want to celebrate a great year of local business wins.

There will be prizes for those getting into the Christmas spirit! Come dressed up and with your team.

December

WHEN: Wednesday 6 December

WHERE: Franklins (Inside Poco Loco)

RSVP: <https://forms.gle/vmLYdgWGFcYfy5Y19>

Thank you to The Longkeeper team for hosting us in September and to The Good Home for hosting us this month!

AUCKLAND THOROUGHBRED RACING

The home of thoroughbred racing at Pukekohe Park

222-250 Manukau Road, Pukekohe
09 238 8049

www.pukekohepark.co.nz

AUTOMOTIVE COMPONENTS REFINISHING

Componentry, restoration and refinishing for automotive, powersports, marine and aviation

183 Manukau Road, Pukekohe
021 940 941
www.acr.nz

AON INSURANCE BROKERS

Leading insurance solutions

58 King Street, Pukekohe
09 237 1135
www.aon.co.nz

BELROSE ENGINEERING

General and agricultural engineering manufacturers

197B Manukau Road, Pukekohe
09 238 8181
belroseengineering.co.nz

BULK FOODS & SPICE MART

Huge range of international groceries

3/243 Manukau Road, Pukekohe
09 238 3730
pukekohepspicemart@gmail.com

DESIGN BUILDERS

Expert house builders and designers

3/245 King Street, Pukekohe
027 488 0044
designbuilders.co.nz

EUROPEAN CAR REPAIR SPECIALISTS

European auto repair shop

156 Manukau Road, Pukekohe
09 238 2069
eurocarservice.co.nz

FRAME HOMES

Award winning homes

35 Te Rata Blvd, Paerata Rise
09 238 1251
framehomes.co.nz

NEW MEMBERS

WELCOME TO THE
PUKEKOHE BUSINESS ASSOCIATION



FRANKLIN COUNTRY MEATS

Premium meats and butchers

187 Manukau Road, Pukekohe
09 238 7289

www.franklincountrymeats.com

FREEDOM COUNSELLING MINISTRIES

Christian based counselling organisation

41-49 Twomey Drive, Pukekohe
022 642 8429

www.freedomcounsellingministries.co.nz

LASERTECH LTD

Custom metal laser cutting

27A Crosbie Road, Pukekohe
022 317 7022
www.lasertech.nz

LEFROY VALLEY

Vegetable seed company

94 John Street, Pukekohe
09 238 3593
www.leefroyvalley.co.nz

MASTERCRAFT KITCHENS

Trusted kitchen designs

121 Manukau Road, Pukekohe
09 239 2226
kitchens.mastercraft.co.nz

MERRIC

Women's fashion retail brand

69 King Street, Pukekohe
09 238 1088
merric.co.nz

NOVUS

Glass repair and replacement

89B Manukau Road, Pukekohe
09 238 5055
novus.co.nz

PGG WRIGHTSON

Agribusiness servicing on-farm needs

219 Manukau Road, Pukekohe
09 237 2020
pggwrightson.co.nz

QUEEN NAIL SPA

Friendly nail and waxing salon

170 King Street, Pukekohe
09 238 6379

PBA PROMOTION

GOLD FRIDAY FOR GOOD

Pledge up to 5% of sales (or a fixed amount) on Friday 24th November to a local charity.

The nationwide feel-good alternative

Gold Friday is a one-day-only promotion held on Black Friday (24th November), where instead of heavily slashing margins and profit, businesses choose to donate up to 5% of every full-price purchase to a local charity.

We want to encourage as many of our businesses and members as possible to join in on this promotion so we can pool our donations together and make a bigger difference supporting local charity.

Businesses outside of retail may also consider opting for a fixed amount or a percentage of invoices received that day.

Greg Hicks from Preview + District has introduced it to his store this year as a way to combat the pressure to heavily discount stock.

"It's important for any small business to get their full margin. But we can all stomach 5% for a good cause," says Greg.

Other local businesses are also getting on board with this feel good alternative to Black Friday sales and its been suggested that we offer the opportunity to our whole community to make a big difference this November.

To reflect the national campaign, we are donating to Salvation Army Pukekohe to help their local initiatives.

Join the Pukekohe business initiative

We would love your businesses support!

Participants and the donations we raise will be well promoted - including online, on social media, in posters, next months' Loop and news coverage.

Instead of discounting stock during the peak shopping season, pledge 5% of sales from the day 24th November (or a fixed amount) to a local charity.

To take part:

1. Register your interest by emailing shawna@pukekohe.org.nz or calling 09 910 0137
2. Let us know if you are participating with 5% of sales or a fixed amount (and if so how much)
3. Cut out the poster on the right for your shop window and utilise the digital assets we send to let your customers know!
4. The PBA will collect the funds (at the discretion of business owners to donate as agreed) and transfer 100% over to the chosen charity. You can choose to keep your donation value private if you wish.



THE FEEL-GOOD ALTERNATIVE

Gold Friday

FRIDAY 24TH NOVEMBER

♥ YOU SHOP, WE GIVE ♥

A PORTION OF FRIDAY'S SALES WILL BE DONATED TO CHARITY



Please help Franklin Family Support fundraise to support counselling for men and boys in our community.

Currently we help 400 clients a year with counselling with 30% being male. We want to continue providing this service to all Franklin locals who ask for our support. Our fundraising campaign is running as part of nationwide small charities project run by #thefundingnetwork.

\$60 will pay for one session of counselling for a child

Business Donations

We would love our local Franklin businesses to donate to our cause. We will make sure to advertise your business through our networks. You can also choose to Matchfund by donating a minimum of \$500. If you are not in a position to donate, we would love it if you could like and share our Facebook links with your networks to spread the word about our cause.

\$360 will pay for a package of six sessions for a child

\$80 will pay for one session of counselling for an adult

6th November - 17th November
Use our QR code to go straight to our Givealittle page



\$480 will pay for a package of six sessions for an adult

Please contact Robyn - marketing@familysupport.org.nz for more info

PUKEKOHE PARK



TICKETS ON SALE NOW



AND SELLING FAST!

Counties Cup Day Saturday 25 November

Top tier thoroughbred racing paired with quite the party makes this a spectacle you won't want to miss. Visit our website for tickets and more information.

pukekohepark.co.nz

— Give it a whirl

With Guthrie Bowron

This month we picked up some colour swatches and flooring samples as we designed our dream office reno!

We sat down with one of Guthrie Bowron's colour consultants, Marilyn, to give interior decoration a whirl. It turns out, there is a lot that goes into designing a home, office, or any space - and an expert can make a lot of difference.

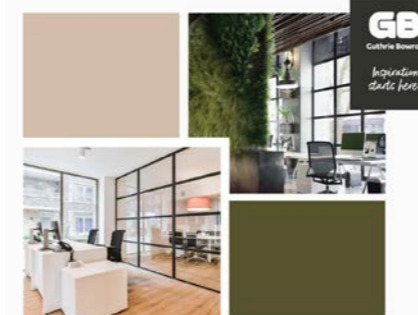
Owner and managing director, Stacey Graves and her husband, Luke, have designed three homes and knew how stressful and intense the process was.

When the opportunity to takeover Pukekohe's Guthrie Bowron store came up last year, she followed the passion. Their store allows you to match and decide the various aspects of your design in one place - flooring, paint colours, wallpaper, curtains, and decor.

Stacey knew she wanted to make the design process easier

While we were happy to run wild and explore all the beautiful options on offer - we started with a colour consultation for our office renovations.

We began by learning how every project and place requires different considerations. Asking questions about where you are located, how much privacy you want, how much sun or shade the building receives and which way it faces ensures the consultants can offer the best advice for the unique project. Even things like having kids and pets affects which



Biophilia Office
MOODBOARD

Decorating with light, natural colours and nature inspired materials can help increase energy & enthusiasm the moment you walk in the door.



Natural materials & colour are easily incorporated into your office: 1. Indoor plants 2. Natural colours such as greens, blues & browns 3. Clean white walls & glass 4. Wood furniture 5. Wall panelling 6. Feature wallpaper walls



carpets and flooring you should use.

Outdoor spaces also require planning and knowledge such as if the current paint is oil or water based and how long it takes for the tannins in a new deck to be drawn out before staining it.

Guthrie Bowron sees clients coming in for everything from new builds and redecorating to fitting out cabins and carpeting garages. Most of these people have some concept of what they want but the experts guide them through each area to evolve the design project.

Nowadays, many people are inspired by bold designs they see on Pinterest and other websites. This is reflected in the range of fun and unique wallpapers, colour schemes and curtains available. Currently, warmer colours are trending as well as 'greige' the mix between beige and grey.

For our small office with limited natural light, Marilyn helped us choose lighter

colours to make it feel open, with pops of our brand colours in the furnishing and dark toned dividers to create depth and contrast. She even created a mood board (extract included on the left) for us that covers what we discussed.

Go check out the store for design inspo! They are also available to come to you, get a feel for your space and provide free measurements and quotes for curtains and flooring.

Don't worry if you're overwhelmed by their amazing choices. Their friendly team will get to know your dream and guide you with expert interior design advice.

Guthrie Bowron Pukekohe
16c Wrightson Way, Pukekohe
09 238 4879
www.guthriebowron.co.nz





PBA NEWS

MEET OUR NEW COMMITTEE

This month, we get to know six members of the committee leading our new strategic plan.

On Monday 30 October, our new executive committee was selected. Read next month's Loop for further updates as we profile the remaining members of our committee.

Congratulations to our two new committee members, Ash Hawke from Signmax and Peter Elliott from Computer Food and our relected members Rupert Ross, Philippa O'Mara, Melissa van den Brink and Maree Trow.

The remaining members are in their second term, Holly Jansen, Sharon England, Joshua Parsons, Merritt Watson and Nutthida Boonprasert.

A huge thanks goes to Holly for the delicious catering provided on the night. The PBA team would also like to share our appreciation for Eugene Hamilton from Franklin's Bar & Eatery and Mark Woodward from Blue Ox Babe for their support in the 2023 committee.

Ash Hawke
Signmax Pukekohe



How long have you been running a business in Pukekohe?

Since 1st October 2017

Whats your most popular product or service?

Our services are all equally important. From design, stationary, apparel, full vehicle wraps, corflute/ACM signs, building signage, lightboxes and so much more. We do it all!

What would you choose to do on a day off?

Hanging out with family & friends, gardening, reading and chilling out on a Sunday night with a wine & movie.

Whats your favourite thing about Pukekohe?

My family live here. I meet my partner here and have the best group of friends. I love that it's a small town /country living. I feel lucky to live in a beautiful place with such wonderful business owners & likeminded people.

Holly Jansen
The Daily Goods &
The Social Pantry Catering Co



How long have you been running a business in Pukekohe?

3 years

Whats your most popular product or service?

Toasties, salads & buddha bowls.

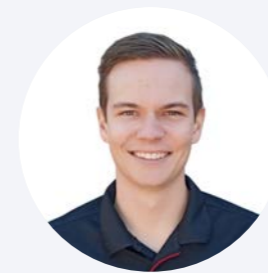
What would you choose to do on a day off?

Head to the beach or walk through the waiuku forest - it's so peaceful!

Whats your favourite thing about Pukekohe?

That local feeling and seeing how much out of towners love our town!

Joshua Parsons
Crosbies Security



How long have you been running a business in Pukekohe?

Nearly six years

Whats your most popular product or service?

Our security towers and monitoring platform!

What would you choose to do on a day off?

Go flying at Ardmore Airport!

Whats your favourite thing about Pukekohe?

The support local mentality here is alive and well, and makes our little town unique within Auckland!

Maree Trow
Stirling Sports



How long have you been running a business in Pukekohe?

I have owned Stirling Sports Pukekohe for 8 years.

Whats your most popular product or service?

A range of products from womens training gear to Nike mens and womens products.

What would you choose to do on a day off?

If it's sunny, walk my hooligan dogs or go to Whangamata. If it's raining I would read a book or watch Netflix!

Whats your favourite thing about Pukekohe?

The amazing community and the people that live here!

Merritt Watson
Pik n Mix Lollies



How long have you been running a business in Pukekohe?

Three and a half years. The first year I grew from a home based business and have only been operating in a commercial site in Pukekohe for 2.5 years.

Whats your most popular product or service?

The best selling products are our Gummy Mix or Sweet n Sour Lolly Mix.

What would you choose to do on a day off?

Relax! Go out for a coffee with my family.

Whats your favourite thing about Pukekohe?

The overall Pukekohe patriotism. All locals supporting each other to create a warm and friendly environment to live, work and do business.

Sharon England
TopNotch Engraving & Book Exchange



How long have you been running a business in Pukekohe?

12.5 years

Whats your most popular product or service?

Trophy Engraving

What would you choose to do on a day off?

Car Rallies in our Anglia

Whats your favourite thing about Pukekohe?

It is the centre of everything with everything. Great shopping area and within 25kms so many awesome beaches, forests & waterfalls.



BUSINESS FEATURE

Supporting Pukekohe's rural community at PGG Wrightson

We talked to PGG Wrightson Pukekohe's Store Manager, Tessa Dooley on how they are supporting farmers and growers gearing up for Spring.

PGG Wrightson has a legacy of servicing on-farm needs spanning 170 years, from delivering bulk stockfeed orders to undertaking research to develop new products.

They have been local rural supplier for many years, with the last nine based in their current store at 219 Manukau Road.

Tessa Dooley has managed the PGG Wrightson Pukekohe Store for the last two years. Her 8 years of previous experience in Pukekohe's farming industry has helped her provide excellence across their all-encompassing range of products and services.

PGG Wrightson and Fruitfed Supplies operate out of the same store to provide comprehensive support for the on-farm needs of Pukekohe growers, farmers and rural lifestylers.

Not only do they supply a massive variety of products for various growers and farmers, but their field representatives also offer technical services including crop monitoring and protection, improving irrigation and plant nutrition, testing and organic alternatives.

In addition, they broker property and livestock purchases & sales, offer insurance to customers and supply contracts to wool growers.

To provide this range of services, they have over 30 staff members based out of the Pukekohe Store.

“We have a diverse range of knowledge in Pukekohe”

PGG Wrightson Pukekohe building includes the in-store retail team, four field representatives, some members of the research and development and technical teams, 5 real estate agents and the base for their livestock team - although they are mainly at Tuakau stockyards.

One of their popular offerings in Spring is crop monitoring. They identify pests, diseases and beneficial insects in a report that helps growers choose protection measures - taking into account the time of year, type of crop and location.

They also offer a huge range of free resources, knowledge, technical guides and news for profitable performance farm on their website and publications.

PGG Wrightson's comprehensive offering is a testament to their passion for supporting farmers and growers and demonstrates that they are much more than just a retail store.



Interview with Tessa Dooley

Pukekohe Store Manager

WHAT ARE YOUR CUSTOMERS SEEKING AT THIS TIME OF YEAR?

With Spring, we are in full swing cropping in the rural space and working with our growers to ensure their crop is at optimal performance.

WHAT DO YOU LIKE ABOUT OPERATING IN PUKEKOHE?

The Pukekohe marketplace is very diverse, and we love seeing all the different clients daily and helping them with agricultural needs.

WHAT SETS YOU APART FROM OTHER RURAL SUPPLIERS?

PGG Wrightson Pukekohe takes pride in our customer service and our technical support. We have worked hard on developing meaningful relationships that support our growers and farmers.

HOW MANY PEOPLE WORK AT PGG WRIGHTSON?

We have more than 30 staff based out of this store. Nationwide, PGG Wrightson has about 1,895 staff.

PGG Wrightson
219 Manukau Road,
Pukekohe
09 237 2020
store.pggwrightson.co.nz

LOCAL ACHIEVEMENTS



FRANKLIN COUNTY MEATS

First place in the National Butchery Award's Team Challenge with a perfect score!

187 Manukau Road, Pukekohe



BAKERS DELIGHT PUKEKOHE

The refurbished store has raised over \$10,000 for the Prostate Cancer Foundation

2/2 Stadium Drive, Pukekohe



BESSIE S

Congrats for being the only Auckland finalists for NZ Beauty Salon of the Year 2023!

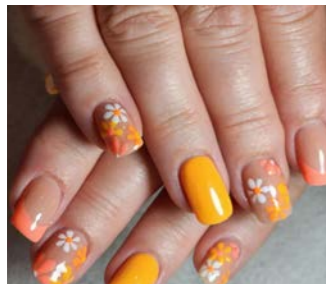
61 Devon Lane, Pukekohe



BLUE OX BABE

This BBQ and Asian Fusion restaurant has just turned 4 years old! To celebrate, Brisket Doughnuts are on the menu this month!

127 Manukau Road, Pukekohe



MODISH & MUSE

Owner and nail art expert, Nutthida was selected as a judge for NZ Nail Competition 2023.

12/73 King Street, Pukekohe



COLUMBUS COFFEE

Local employee Imagodei won their national Barista championship and placed second for latte art.

65-67 Edinburgh Street



Visit our pop-in store

PIKNMIX

LOLLIES

105D Manukau Road,
Pukekohe, Auckland

WWW.PIKNMIX.CO.NZ

Family owned, operated + argued over!



HOME LOANS
LENDING
KIWISAVER



Claire McArthur

MORTGAGES

I educate and enable my clients to navigate their home loan and Kiwisaver journeys with assurance, confidence and ease.

I know that behind every loan is a story – one of hard work, patience and ambition. Of personal dreams, future visions and family legacies. With me, you're never just another application form; it goes deeper than simply ticking boxes for approvals. The real heart behind what I do is about helping people put down roots, make a house a home, find financial freedom and build a future they're proud of.

Claire

Claire McArthur Mortgages

CLAIREMCARTHUR.CO.NZ
021 02000 177



FREE EVENT
IN PARTNERSHIP WITH



SATURDAY 2 DECEMBER

CHRISTMAS ON THE GREEN

NAVIGATION HOMES
STADIUM PUKEKOHE

LIVE MUSIC, ENTERTAINMENT, FREE RIDES, FOOD TRUCKS, GIVEAWAYS & A VISIT FROM SANTA!

3PM - 7:30PM

PUKEKOHE.ORG.NZ

