

the loop.

Keeping you in it

July 2023

BUSINESS FEATURE

Franklin Family Support Services

Business Talk
Banning Single Use Plastic

NEWS FROM THE PBA
WHAT'S ON IN JULY

What To Wear
Your Next Black Tie Event

Nau mai, haere mai Welcome to Pukekohe

Contents

- P3. PRESIDENT'S REPORT
- P4. NEWS FROM THE PBA
- P5. WHAT'S ON IN JULY
- P5. BANNING SINGLE USE PLASTICS
- P6. FEATURE: FRANKLIN FAMILY SUPPORT SERVICE
- P8. WHAT TO WEAR: BLACK TIE EVENTS
- P11. POLICE REPORT
- P13. LOCAL ACHIEVEMENTS
- P14. PUKEKOHE IN PICTURES

Pukekohe means "hill of the Kohekohe"; Kohekohe is a native hardwood tree. The town is named for its dominant feature, Pukekohe Hill. This dormant volcano contributes to the fertile soil that, along with a mild climate and high rainfall, has made the region famous as the food bowl of New Zealand. We acknowledge Ngāti Te Ata and Ngāti Tamaho as Mana Whenua in this area.

Close to Auckland, Hamilton and Tauranga, Pukekohe is positioned in the heart of Franklin. This growing town holds a unique character of rural culture and an increasingly urban vibe. Even as it grows, Pukekohe continues to deliver on its reputation as a well-connected town with outstanding lifestyle quality and a vibrant village atmosphere.

What is the Pukekohe Business Association?

Our aim is to promote prosperity in Pukekohe by encouraging growth, development, and sustainability.

We support local businesses by working closely with business owners, the council, and community, to enhance business success and growth. Founded in 1992 to promote and represent local interests, we represent over 700 Pukekohe businesses.

The PBA is governed by a volunteer executive committee of local business owners. The Association administers the Pukekohe Business Improvement District (BID), a partnership between local government and the business community to develop, promote, and support the local economy.

What do we do?

- Free events such as School Holidays in the Square and Christmas on the Green
- Sponsoring community initiatives & events
- Giveaways and competitions
- Town placemaking projects
- Local advocacy via our relationships with Police, Government Agencies, Auckland Transport, Franklin Local Board, Auckland Council and its subsidiary organisations
- Promotion of Pukekohe
- Business support including subsidies, training & seminars, networking, promotional & advertising opportunities
- Pukekohe Business Excellence Awards

For more information about the PBA or The Loop, please contact us on 09 910 0137 or email, info@pukekohe.org.nz

WE ADVOCATE FOR, SUPPORT, & PROMOTE LOCAL BUSINESSES.

PRESIDENT'S REPORT

A Reason To Celebrate



At the PBA we are on the countdown. Our business excellence awards night is on July 22. This will be the first one since 2019.

We were apprehensive about how popular this event would be. There is plenty going on in the business environment currently – interest rates increasing, credit tightening, a cost-of-living crisis, crime, and an election season starting – you get the idea.

Our expectations have been blown out of the water. The demand for tickets has been much higher than we anticipated.

Our local community have really engaged with the people's choice. It seems a celebration of local business success is long overdue.

This night is going to be amazing. Along with recognising the best of Pukekohe business, we have outstanding entertainment, culinary delights, and snappy music. Much more than an awards ceremony, this will be our region's premier black-tie event. Shawna and her team have done a brilliant job. Get a late pass, you might not be home until midnight.

In other news, you are holding a new and improved Loop. Members have given us much practical and useful feedback including that Pukekohe lacks a regular local publication that focuses purely on our community; many look forward to the physical copy of The Loop and display them in their business; customers enjoy reading them; could there be more options for advertising and local business recognition. We say yes to all of these.

This new Loop is more than double in size. In the near future we will consider

increasing production numbers and delivering to local letter boxes. We may consider special editions to highlight seasonal local activity. Other business associations produce similar publications so it is obviously a popular idea.

"We appreciate all creative member feedback that leads to innovation and better business engagement"

Now go and mark July 22nd on your calendar and plan your outfit!

Here's to celebrating the best of our local business.

Rupert Ross, PBA President

Administration



Manager
Shawna Coleman
shawna@pukekohe.org.nz



Events & Communications Co-ordinator
Courtney Johnson
courtney@pukekohe.org.nz



Administration Co-ordinator
Kate Morgan
kate@pukekohe.org.nz

Committee



Rupert Ross
President
Vibra Train
Pukekohe
09 238 1951



Eugene Hamilton
Franklin's Bar & Eatery
Pukekohe
09 238 4680



Sharon England
TopNotch Engraving & Book Exchange
Pukekohe
09 238 5684



Philippa O'Mara
Treasurer
Engine Room
Chartered Accountants
09 238 5939



Holly Jansen
The Daily Goods



Merritt Watson
Pik n Mix Lollies
021 425 555



Melissa van den Brink
Vice President
Smith & Sons Renovations & Extensions Franklin
0800 002 760



Joshua Parsons
Crosbies Security
0800 113 262



Nutthida Boonprasert
Modish & Muse
09 238 7797



Alan Cole
Franklin Local Board Representative
021 923 719



Maree Trow
Stirling Sports Pukekohe
09 238 7689

09 910 0137
pukekohe.org.nz
info@pukekohe.org.nz

Follow us on
Facebook & Instagram
[@pukekoheba](https://www.facebook.com/pukekoheba)

Disclaimer: Whilst every effort has been made to provide valuable, useful information in this publication, the Business Association accepts no responsibility or any form of liability from reliance upon or use of its contents. Any suggestions should be considered carefully within your own particular circumstances, as they are intended as general information only.

— News From The PBA

This month we cover changes in business regulations, the ban of single-use plastics, a call for more volunteers from the Pukekohe community patrol and we share upcoming local events.



YOUNG ENTERPRISE SCHEME

Congratulations to all the amazing participants at the Young Enterprise Scheme competition on Saturday 26 June.

Our manager, Shawna was so impressed with the standard while judging this year's entries, with Read With Me taking out first place.

CLOSURE OF SH1 PAPAURA ON-RAMP

Extended closures of Papakura on-ramp are set to run from Monday 26 June until September.

Southern Motorway (SH1) Papakura southbound loop on-ramp will be closed for two and a half months. The extreme right turn lane off-ramp will also close for two months. This is a complete closure (24/7).

A signposted detour to the Drury interchange will be in place. Motorists wanting to head southbound at Papakura can also choose to use the Takanini interchange.

PARENTAL LEAVE PAYMENTS INCREASE

From 1 July, parental leave payments will increase 7.7% to reflect the rise in average weekly earnings.

The maximum weekly rate for eligible employees and self-employed parents will increase from \$661.12 to \$712.17 gross per week.

The minimum parental leave payment rate for self-employed parents will increase this year from \$212 to \$227 gross per week, to reflect the minimum wage increase on 1 April.

PUKEKOHE COMMUNITY PATROL NEEDS YOUR HELP

Community Patrols of New Zealand (CPNZ) desperately needs local volunteers to help build a safer local community.

Their initiatives include patrolling residential, business and industrial areas, reporting suspicious activity, gathering information for police through note taking and recording, assisting in accidents, crime scenes, and crowd control, watches for stolen vehicles, property and missing persons.

No experience is needed. They offer regular Police guidance, training and taskings. If you or someone you know would like to be part of their rewarding team, email pukekohe@cpnz.org.nz

CHANGES TO WORK VISAS

From 9 October, the current Skilled Migrant Category settings will be replaced with a simplified points threshold for residence.

Under the new, simplified system:

- applicants must have at least 6 points to be eligible
- they gain 3 to 6 points on either NZ occupational registration, recognised qualifications, or income
- 1 point per year of working a skilled job in New Zealand, up to 3 points

From November 2023, the maximum duration of an Accredited Employer Work Visa will be extended from 3 years to 5 years to align with the introduction of 5 year maximum continuous stays for AEV holders.

What's On

Local events in July

FRIDGE MAGNET MAKING

WHEN: Fri 7th July, 2pm - 3pm

WHERE: Pukekohe Library

FRANKLIN MUSIC NIGHTS - AFTERNOON EDITION

WHEN: Sat 8th July, 1:30pm - 3pm

WHERE: Franklin Arts Centre

SKATEBOARDING HAVE A GO PROGRAMME

WHEN: Tue 11th July, 10am - 12pm

WHERE: Pukekohe Skate Park

WHAT: Learn from Young Guns Skate School Coaches. Suitable for 8-14 year olds.

CURE KIDS GALA EVENING

WHEN: Thu 20th July, 6pm - 9pm

WHERE: Columbus Coffee Inside Mitre 10 MEGA, 12 Wrightson Way, Pukekohe

WHAT: A night of entertainment including auctions, bingo and dinner with prizes donated from local businesses.

MATARIKI MARKETS

WHEN: Thur 20th July, 6pm - 9pm

WHERE: Pukekohe High School Hall, 14 Harris Street

WHAT: Five schools present markets & performances.

Upcoming member events

COMMUNITY CCTV UPDATE

PBA and local Police are hosting members in August to provide an update on plans for new CCTV cameras in town.

WHEN: Tuesday 22nd August

WHERE: PKJ Lounge

PUKEKOHE BUSINESS EXCELLENCE AWARDS **SOLD OUT!**

Celebrating local business success at our upcoming Black Tie awards.

WHEN: Saturday 22nd July
Doors open 6PM for networking, wine and canapes

WHERE: PIA Event Centre

PLASTIC BAN

From 1 July, it will be illegal to sell and manufacture the single-use plastic items below.

Time to phase out these single-use plastic items:

PRODUCE BAGS



DRINKING STRAWS*

TABLEWARE & CUTLERY



PRODUCE LABELS*

*Some exemptions apply.

The sale of single-use plastic straws will be banned, with exemptions for those with disabilities or health needs. An exemption for on-pack straws will be in place until 1 January 2026.

Compostable or 'plant-based' plastic alternatives are also banned for all items, except produce labels. Non-home compostable plastic produce labels will be phased out in two steps by mid-2025.

STEPS TO PREPARE

1. Manage current stock and consider your options
2. Attend a free, online session for businesses: Aotearoa NZ Plastic Phase-Out: Monthly Info Sessions
3. Inform your team and customers

UNDERSTAND YOUR OBLIGATIONS

The ban applies where the items are sold or supplied for free, and where they are provided individually or in packets. Penalties may apply for non-compliance.

This includes retail and hospitality businesses, market stalls, festivals, events, suppliers, importers, online marketplaces, organisations and not-for-profits.

For more information, visit: environment.govt.nz

NEW MEMBERS

WELCOME TO THE PUKEKOHE BUSINESS ASSOCIATION



COUNTIES PODIATRY

Foot care provider helping you stay active and on your feet.

20 Hall Street, Pukekohe
09 238 1424
countiespodiatry.com

HOT SPRING SPAS

NZ's oldest spa retailers offering quality designs, parts and accessories.

3B/7 Wrightson Way, Pukekohe
09 242 2655
hotspringpukekohe.co.nz

INFINITY SUPPLEMENTS

High quality sport and health supplements.

8B Hall Street, Pukekohe
09 239 0175
[@infinitysupplementsnz](https://www.infinitysupplementsnz.com)

LANDMARK HOMES AUCKLAND SOUTH & FRANKLIN

Home building company with award winning designs, customised to you or ready to build.

22 West Street, Pukekohe
0800 628 859
landmarkhomes.co.nz

OD ON HAIR

Colour, cut and retail hair salon offering high end colour work, colour corrections and after care.

12 Massey Ave, Pukekohe
09 238 1132
odonhair.co.nz

REDUCED TO CLEAR

Wide selection of food and drinks at bargain prices.

14 Stadium Drive, Pukekohe
09 972 2742
reducedtoclear.co.nz



BUSINESS FEATURE

Franklin Family Support Services

A wrap-around social service provider who have been supporting our community for forty years.

Franklin Family Support Services (FFSS) is a one-stop shop for many important community and government services.

Their offering ranges from JP service, parenting classes, food packs, smoking cessation to free 15-minute lawyer appointments, counselling, social work, budgeting and a volunteer drivers programme to Auckland hospitals.

FFSS is a Heartland Service Centre providing locals with connections to approximately 25 government agencies. The majority of their funding comes from Government contracts with MSD, Education and Justice. This funds 686 individuals and families each year. However, FFS helps 12,000 individuals and families each year and rely on

community support, sponsors and donations to do so.

Their building at 205 King Street, Pukekohe next to Possum Bourne's statue, was redesigned two years ago to provide purposeful soundproof spaces to offer counselling, social work and budgeting sessions.



There is a large community hub which is used for parenting classes and is available for hire.

As a charitable trust, Franklin Family Support Services has funding from a variety of places including government contracts. However, they rely heavily on grants and community fundraising to continue providing services at its current level.

This year FFSS were funded to provide 120 counselling courses to children and adults, but have actually provided 300. This is their greatest need in terms of fundraising and FFSS are always grateful for business or community help.

to provide 50 families with hams or a hamper to make their holiday season easier.

Franklin Family Support Services' values providing individuals and whanau with the tools they need to lead their own journey of change.

If you need help you can simply call their team on reception or fill in an online referral form on the website.

Franklin Family Support Services
205 King Street, Pukekohe
09 238 6233
familysupport.org.nz

Government contracts fund assistance to 686 clients. The remainder of the 12,000 individuals and families that access services each year rely on donations & sponsors.

Another way for businesses to support is with a can or food donation. They offer food parcels to clients who are engaged with our budgeters in an effort to reduce their debts. At Christmas FFSS run an annual Smiles Appeal seeking support



Interview with Robyn from Franklin Family Support Services

WHAT IS THE MISSION OF FFSS?

Our Mission is to strengthen our Franklin community through empowering, mana-enhancing support and programmes.

WHAT TYPES OF SERVICES DO YOU OFFER THE COMMUNITY?

We offer a range of social services which support individuals and whanau. Most of our services are completely free though there can be charges for counselling and our driver service.

- Social Workers
- Counselling
- Budgeting
- Parenting Classes (antenatal, 3-8 years olds and parenting teens)
- EnergyMates (support with heating efficiency in your home)
- Volunteer Driver Service which takes patients up to Auckland Hospital or Superclinic appointments. This can be free or a paid service depending on location, community service card, age and ethnicity.
- JP Service 3 mornings a week
- Free community lawyer once a month (15 minute meeting)

HOW LONG HAS FFSS BEEN PROVIDING SUPPORT TO PUKEKOHE?

We have been operating in Franklin for 40 years. We currently employ 25 staff and around 35 volunteers who work in our driver service.

WHAT WOULD WE FIND YOU DOING OUTSIDE OF WORK?

Out on adventures with my family either in Auckland City or out at Hamilton's Gap our favourite beach.

WHAT TO WEAR: BLACK TIE

Pukekohe Business Excellence Awards

Event season is here! Not only is the Pukekohe Business Excellence Awards coming up but it's formal season – from balls, galas and awards nights, it's time to plan what you'll be wearing.

LISA'S BOUTIQUE



Where to shop this:
92 King St

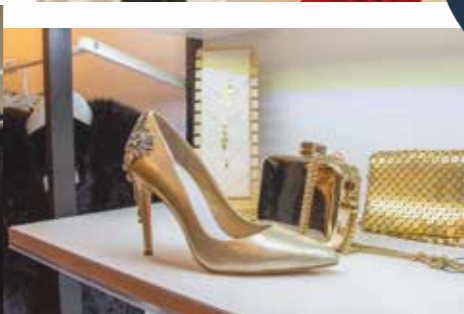


Where to shop this:
5 King St
pagani.co.nz

PAGANI



REPRESENT BOUTIQUE



Where to shop this:
212 King St
representboutique.co.nz

While we have a lot of fashionistas in Pukekohe, we know some of you are typically in sneakers and jeans, or even gumboots. You may not have an outfit ready for your next black-tie event or are simply in need of some inspiration.

Some of our local clothing retailers have been kind enough to share their recommendations. Whether you are feeling glam, sophisticated, or daring, there is something for everyone's style here in Pukekohe. Take a look at what's in right now...

LEWIS FOR FASHION



Where to shop this:
122 King St

FARMERS



Where to shop this:
3 Wesley St
Pukekohe Plaza
farmers.co.nz

FOOTLOOSE SHOES



Where to shop this:
113/117 King St,
footloose.co.nz

MAGAZINE DESIGNER CLOTHING



Where to shop this:
74 King St,
magazineclothing.co.nz

MIKKO SHOES



Where to shop this:
9 Wesley St
Pukekohe Plaza
mikkoshoes.nz

PREVIEW & DISTRICT



Where to shop this:
156 King St,
previewanddistrict.co.nz





— Subsidies

We established our subsidy programme to support businesses in areas that are easily overlooked when under pressure.

Full members can apply for subsidies up to the value of \$3000 + GST to improve their premises, business, or capabilities as a business owner. We offer \$500 + GST for each of the following:

Business Advice & Training Subsidy

This subsidy allows members to work with a business mentor, an accountant, lawyer or other business professional and can even cover the cost of sending staff on a training course.

CCTV & Security Subsidy

Apply for this subsidy to purchase a quality CCTV system to protect their premises. It can also cover the costs of security patrols, guards, alarm installation or securing your site.

e-Commerce Website Subsidy

Making sure customers can easily and conveniently purchase products or services online can future-proof any business. The e-Commerce subsidy enables capability on a new or existing website.

Health & Safety Subsidy

This subsidy gives members help accessing services and other support that will assist in improving workplace health and safety. This could include developing or updating your plan or investing in training for employees.

Marketing Subsidy

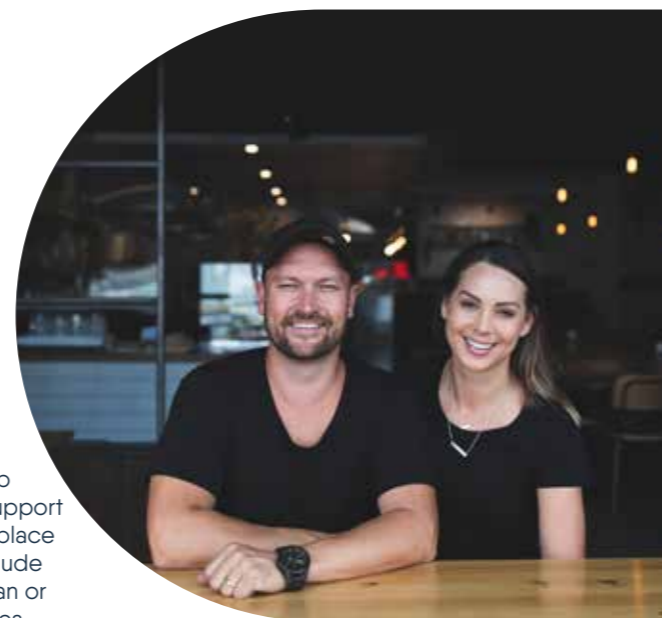
This subsidy can be put towards marketing related costs such as advertising, website development, design and print, branding, developing a marketing plan and more.

Shop Front Tidy Subsidy

You can be put this towards visible improvements to fixed assets, such as painting, repairs, cleaning and signage.

Contact us to apply

Approval required. Terms and conditions apply.



Brad and Alex Smith from Winner Winner

“We used the subsidy to extend our CCTV system. Every dollar counts when you are a business, so the subsidy really made a difference to us.”

Brad Smith, Winner Winner

— Police Report

With Constable Keven Greasley

It is unfortunate that we are dealing with another spate of ramraids in our community. As much as it may not feel like it, Pukekohe has a statistically low amount of these incidents. The recent hits on our much loved stores are equally disheartening to Police as it is to you all, however, strong leads are being followed to find those responsible.

We have received numerous reports of harassing behaviour by individuals engaged in begging activities. These incidents have occurred at various locations throughout our community, affecting both pedestrians and businesses. I have spoken to the management of the residence of the individuals involved. They have insisted that there is no need to supply money as they are supported financially. Please continue to highlight any inappropriate behaviour to Police.

It has been noted that many of the recent string of shoplifting incidents are being conducted by out of town offenders. There is a huge importance of community involvement in combating these criminal activities. We urge residents, business owners, and employees to remain vigilant and report any suspicious activities or individuals to the police immediately. Quality CCTV footage will be distributed to our wider Police districts requesting nominations of these individuals who will soon become known to us.



Please remember that the use of social media platforms and WhatsApp is not reporting these incidents to the Police. Call 111 in an emergency or if it is happening now, or 105 for reporting issues after they have happened.

Additionally, we encourage businesses to review and enhance their security measures, such as installing robust security systems, adequate lighting, and physical barriers to prevent or deter incidents. Please speak to PBA about the security subsidy that is on offers if you haven't already.

See you out there,

Keven

informatiks

Technology Solutions Simplified

- » HOME AUTOMATION
- » SMART CCTV SYSTEMS
- » PROFESSIONAL LICENSED INSTALLERS
- » SPECIAL PACKAGES FOR NEW BUILDS

Contact: 0210 313 936 | www.informatiks.co.nz
support@informatiks.co.nz

signmax

www.sign-max.co.nz

- » DIGITAL PRINTING (BUSINESS CARDS, POSTERS, FLYERS ETC.)
- » STICKERS & DECALS • VINYL WRAPS & VEHICLE GRAPHICS
- » BUILDING SIGNAGE & WINDOW GRAPHICS
- » APPAREL PRINTING
- » PVC BANNERS & EXHIBITION DISPLAYS
- » ILLUMINATED, 3D & NEON SIGNAGE

BAYLEYS PUKEKOHE Multi-Award Winners

Bayleys Real Estate - Auckland Residential & Lifestyle

Congratulations



Top Office Growth
Pukekohe



Manager
of the Year
Sharleen Buchanan



Admin Superstar
of the Year
Kirsten Meier



Salesperson of the Year
Under 5 years
Mike Murphy



Top Achiever
Michele Mathieson



High Achiever
Mike Murphy



Super Achiever
Ian Buchanan



Super Achiever
Mark Fourie



Bayleys Top 5%
Michele Mathieson



Bayleys Top 10%
Mike Murphy



Bayleys Top 10%
Shane Snijder (C&I)

— LOCAL ACHIEVEMENTS



POCO LOCO

Happy 19th Birthday to Poco Loco! Here is to many more years of your delicious tapas in Pukekohe.

15 Queen Street, Pukekohe



BARFOOT & THOMPSON

Congratulations to your team! They were awarded Branch of the Year 2023 for a third time in a row.

68 King St, Pukekohe



MUSE SALON

5 years ago Shane bought and rebranded Muse Salon! This month they are moving to a new premise:

131 King St, Pukekohe



FOOTLOOSE SHOES

Happy 16th Birthday to the Footloose team. They have been running a huge sale to celebrate!

113-117 King Street, Pukekohe



NZHL FRANKLIN

Well done for winning the Financial Freedom Award! For two years running the branch had the most clients become debt free!

83 Manukau Road, Pukekohe

SHOUT OUTS

COLUMBUS COFFEE

Monique and the team at Columbus Coffee (inside Mitre 10 MEGA) are hosting their annual fundraiser evening this month for the Cure kids foundation. More information on page 5.

12 Wrightson Way, Pukekohe

COUNTIES ENERGY

Partnering with Franklin Family Support Services to provide EnergyMate programme for saving power and winter warmer packs. Other local businesses contributing to the packs include The Warehouse Pukekohe, Spotlight Pukekohe and Wilcox.

14 Glasgow Road, Pukekohe



BAYLEYS REAL ESTATE

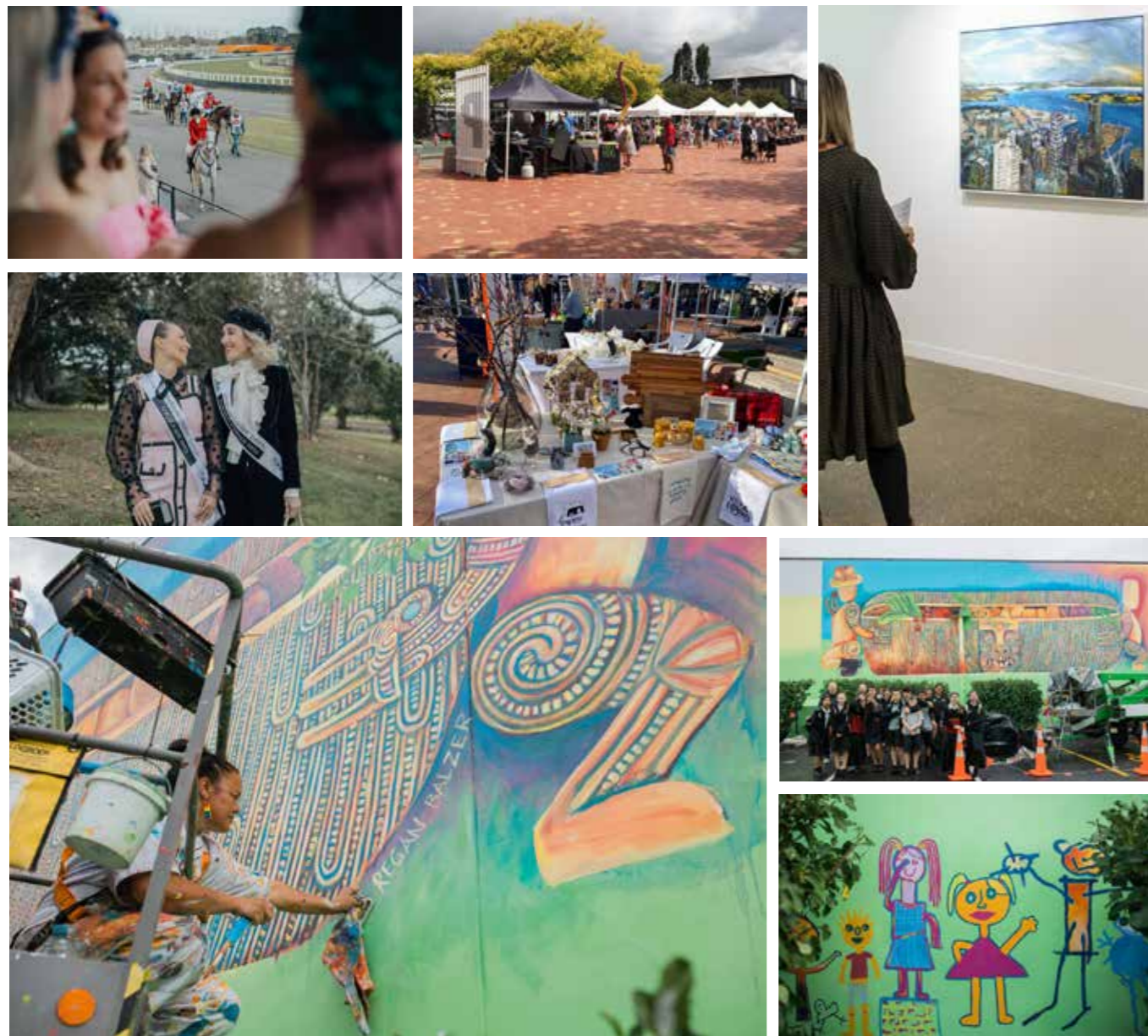
Bayleys Real Estate Pukekohe had a fantastic result at the Bayleys Real Estate Auckland Awards (see left page). Congratulations on all your success!

8 Massey Avenue, Pukekohe



Pukekohe in Pictures

June Highlights



PICTURES INCLUDE:

Second generation Pukekohe grower, Ilan Fong, director at The Fresh Grower, in a recent interview with Supermarket News
 Pukekohe Park hosted a Lindauer Ladies' Lunch for the last racing day of the season
 Arts and Crafts markets in the town square hosted by Eke Panuku
 Artist Helen Morrison's recent exhibition The Golden Hour at Franklin Arts Centre
 Kumete - The Foodbowl: A new mural painted by Regan Balzer with assistance from Pukekohe High School Students

Wondering what a plastic surgeon could do for you?

Sponsored Content supplied by Cutting Edge Plastic Surgery

Find out how a visit to Cutting Edge Plastic Surgery could change your life. It's more than skin deep, but skin health and skin cancer screening is a good place to start...

It's all about you at Cutting Edge Plastic Surgery. Operating from a new building in Roulston Street for just over a year now, Adam Greenbaum and his dedicated team continue to grow this thriving surgical service with its focus firmly on personalised care. General consultations and all other treatments are conducted in the quiet and friendly facility at the Pukekohe practice at 11-13 Roulston Street, or two streets away at Franklin Private Hospital for bigger operations under general anaesthetic.

The new space has also allowed the business to offer more services - as Adam explains "with SkinZure, we now have a one-stop-shop service in Pukekohe and the Franklin area for skin screening. Quite simply it's one phone call to book a full body skin check. What's more it's cost

effective because it saves patients the expense of a visit to a mole checking service, plus a GP visit if a problem is found, so they can then be referred to a specialist for which they pay yet another consultation fee. With our practice it's one referral for total body photography, a dermatoscopic examination of the skin and a specialist assessment and opinion, so you not only save money but more importantly time. From skin check to a diagnosis and treatment is a matter of days not months which also removes the stress of juggling multiple appointments and referrals in the process."

With a team of 3 specialist nurse dermoscopists, boasting over 90 years of nursing experience between them, much of that in specialist plastic surgery, alongside specially trained healthcare assistants working with Adam, Cutting Edge Plastic Surgery is well equipped to support patients with a range of services.

We have a special offer for August when Adam has a commitment for ¾ of

CUTTING EDGE PLASTIC SURGERY

Whether you want advice on skin cancer; optimising your appearance; have problems with hand function; or you are considering surgery to reduce, lift or enlarge breasts or a "tummy tuck" Adam's focus is on providing you with the best advice, service and expert care possible.

the month, but everyone else is here and raring to go. Patients who book and have their full body skin check during those 3 weeks in August can have them at ¾ of the price.

A full body skin check with SkinZure at Cutting Edge Plastic Surgery at 25% discount on the usual price.

To find out more check out the website at www.ceps.nz or phone the practice on 09 238 8881.



BARGAIN CHEMIST+

Pukekohe

**16 Wrightson Way
Monday - Friday
8AM - 6PM**

**BIG BRANDS,
BIG SAVINGS**

**100%
KIWI OWNED**



SHOP YOUR NEW
**Winter
Wardrobe**
IN PUKEKOHE

